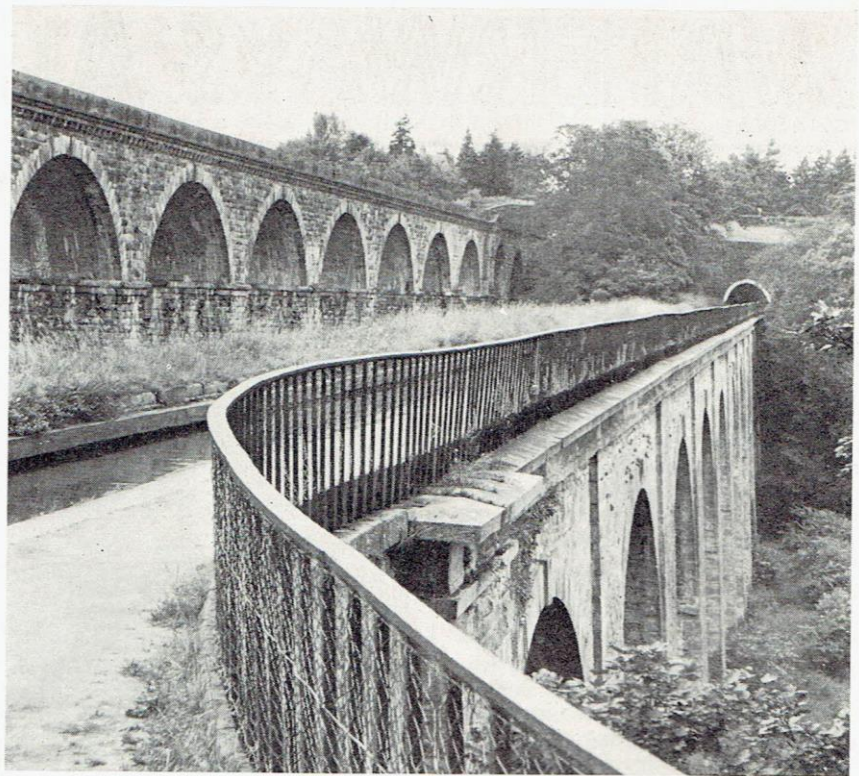


# The Railway and Canal Historical Society

*Object: To promote, encourage and co-ordinate the study of the history of canals, railways, and transport.*

*Railway viaduct and canal aqueduct pass side by side over the river Ceiriog at Chirk.*



The Railway and Canal Historical Society, founded in 1954 and incorporated in 1967, now has some 400 members all over Britain with a small number overseas. Local groups have been formed in London, the East and West Midlands, the North West, North East, and Devon & Cornwall. All meet regularly for lectures and discussions or visits and tours to places of railway and canal interest. On a national basis weekend tours are held in various parts of the country and lectures open to the public are organised in the larger centres.

For a modest annual subscription of £1.75, a member is entitled to attend the meetings of any of the local groups and in addition he receives each month a copy of the Society's *Bulletin* and each quarter the *Journal*. Both these publications are of great value to all persons interested in transport history. The *Bulletin* lists not only all the activities of the Society but also draws attention to exhibitions, events, publications, etc. that would otherwise probably go unnoticed. It is of particular value as a source of information concerning local history pamphlets and the like that do not merit inclusion in the national press but are of great value nevertheless. Another useful service in the *Bulletin* is to publish on request from a member details of any line of research he may be currently follow-

ing so that he is immediately put in touch with other members who may be able to help. This also avoids possible duplication of effort.

With current information in the *Bulletin*, the *Journal* can concentrate on publishing features based on careful, original research. This includes articles of a general nature together with tabular matter where appropriate. Much of this latter can provide an important service to historians and students. Regular features include annual lists of centenaries of opening dates and Parliamentary Acts.

## Society Publications

The Society has already produced a number of publications which have met with wide approval. These include the excellent map of the Kingston, Leominster & Stourport Canal by R. J. Dean and a number of works by M. J. T. Lewis, G. O. Holt, M. D. Greville and others. This facet of the Society's activities is being expanded and is providing a useful contribution to our knowledge of transport.

On joining, a member is sent a copy of the list of members' names and addresses which is reissued annually and the postal library catalogue which already has several thousand volumes including numerous works not readily available elsewhere. Borrowing from the library is entirely free to members,

the only payment being the postage each way. As well as the library, housed in Leicester, the Society has a considerable collection of maps, manuscripts, notes and other research material, which is housed in the new Birmingham Reference Library.

## Research Department

It is not possible here to mention all the activities of the R&CHS but a word must be given on the work of the Research Department. This is engaged in the mammoth task of indexing all railway and canal research material in libraries, record offices, etc. throughout the country. Much has already been achieved and the Index Advice Service has been launched. This enables anyone researching in a particular field to obtain from the Society on payment of a small fee to cover cost, photocopies of all index cards relating to any particular railway, canal or waterway. It is a valuable service and it is just one of the many ways in which the Railway & Canal Historical Society is doing a worthwhile job. New members are very welcome and an application form and details will gladly be sent to anyone interested by the Hon. Secretary: J. R. Harding, 174 Station Road, Wyld Green, Sutton Coldfield, Warwickshire.

J. Horsley-Denton.